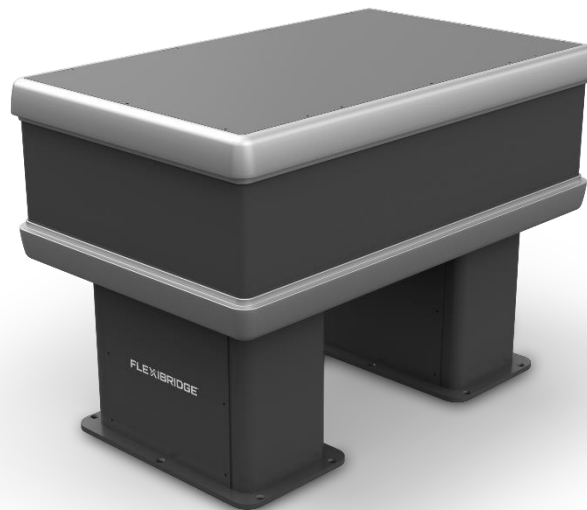


Doc type: Datasheet
Part number: 443090/443102

Date: 30.05.2021
Revision: 00
Page: 1 of 1

FB 042

Wing navigation console



SPECIFICATIONS

| | |
|----------------------------------|--|
| Material | Aluminum |
| Coating | Powder coated Standard Black RAL 9005 & Grey RAL 9006 |
| Height, Depth, Length | 817 mm (H) 520/700 mm (D) 1200/1500 mm (L) |
| Weight | 77 kg |
| Noise level | < 36 dBa |
| Voltage | 24 VAC |
| Power consumption empty console: | |
| Ventilation | 48 W |
| Service lights | 21 W |
| Reading lights dimmable | 7 W |
| Hoist lowering | Standby 1 W, operation 430 W |
| Outlet | 1 for service computer |
| Service lights | 1 LED lights |
| Reading lights | 1 goose neck (optional) |
| Ventilation | Termostat controlled |